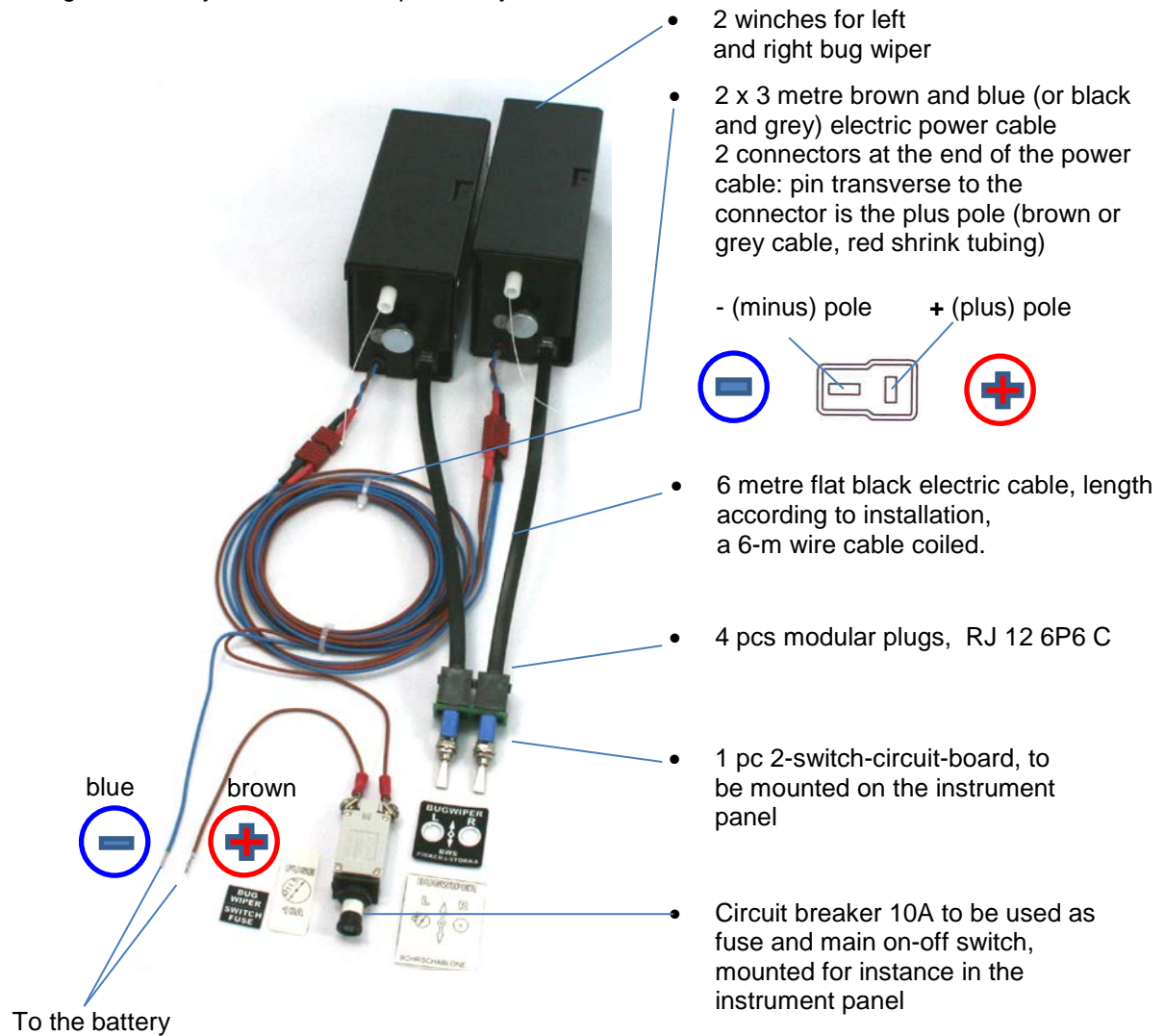




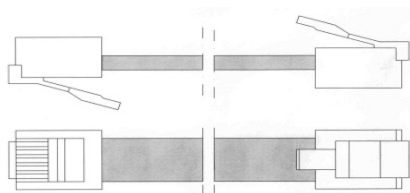
Cable system for Single Seater

This is a recommended cabling, connecting the 2 electric winches with the operating switches, fuse and battery.

Cabling is done at your risk. and responsibility.



Both electric power (brown) cables are connected via the circuit breaker to the battery. For safety reasons the battery itself must be equipped with a 15 Ampere fuse (or an extra 15 A fuse has to be installed close to the battery terminals).



- In case modular plugs and control cables have been delivered separately, see how the plugs have to be mounted on the cable.
- Note in drawing that the cable is not twisted.