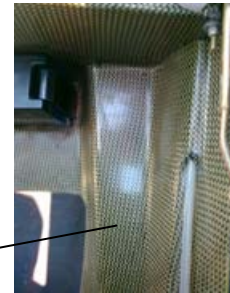
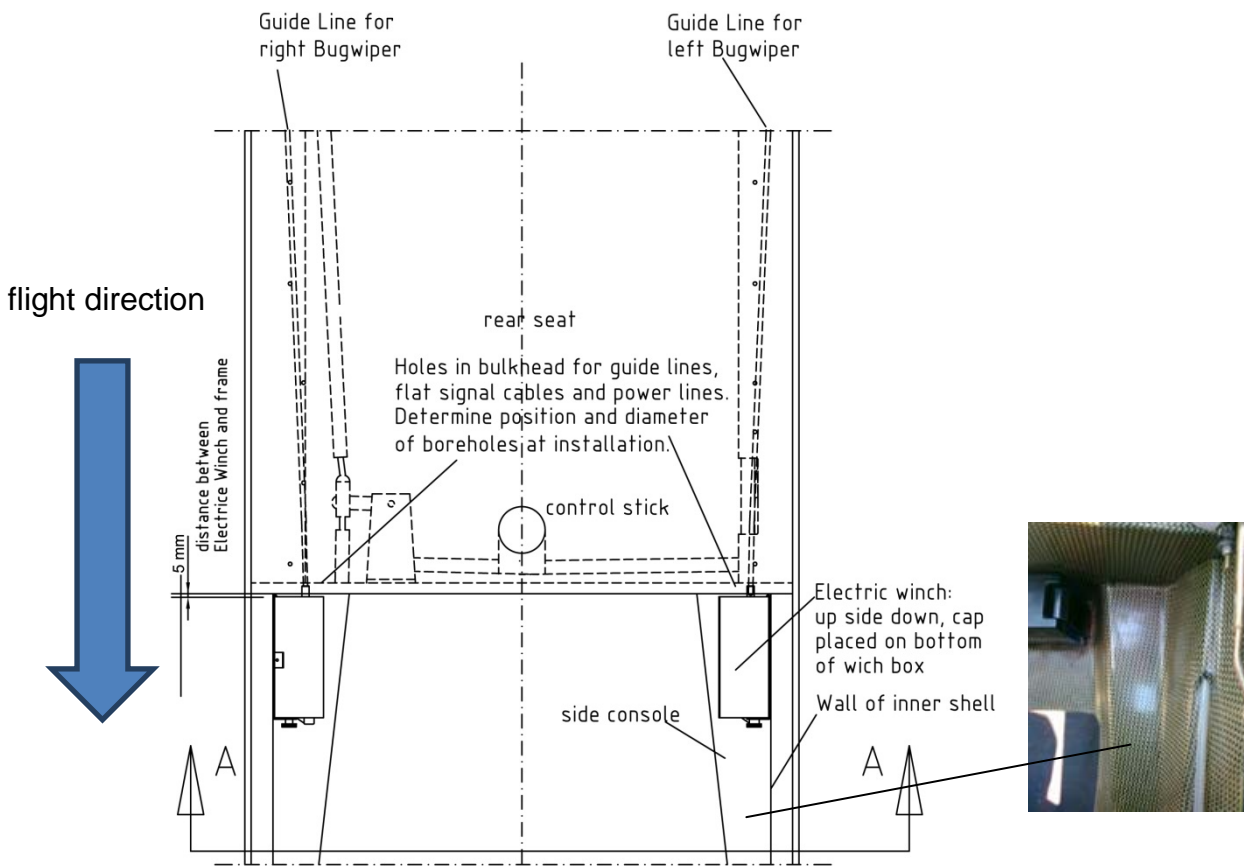


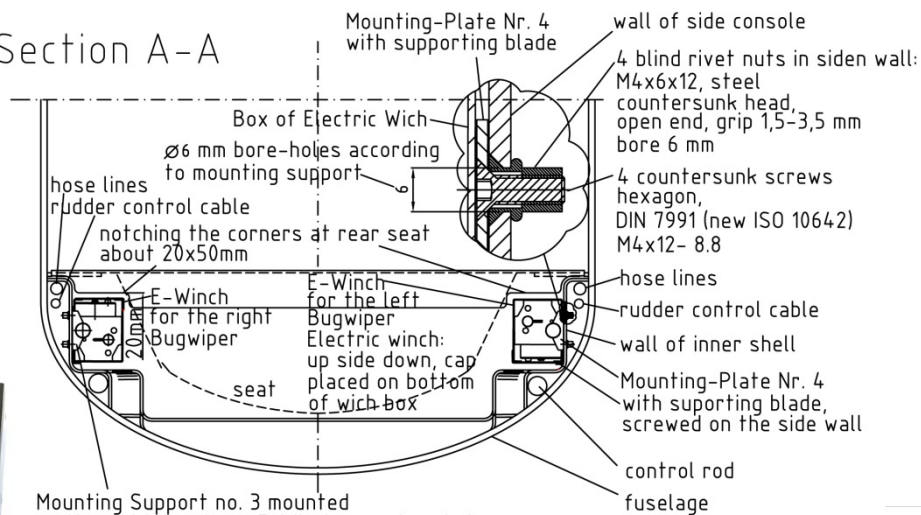


### ARCUS: Installation Sketch

Top view of Arcus at rear seat and section A-A



### Section A-A



Mounting Support no. 3 mounted on the right fuselage, E-Winch-cap placed above

**Warning !!** when drilling the holes for blind rivet nuts, take care for the rudder control cable. They are placed between fuselage and wall of inner shell risk of damage !!

Drawing:  
 Ing. Friedel Storka 31.03.2014  
 geänd. 03.09.2014  
 geänd. 30.10.2014  
 geänd. 12.03.2017  
 geänd. 06.04.2017

